



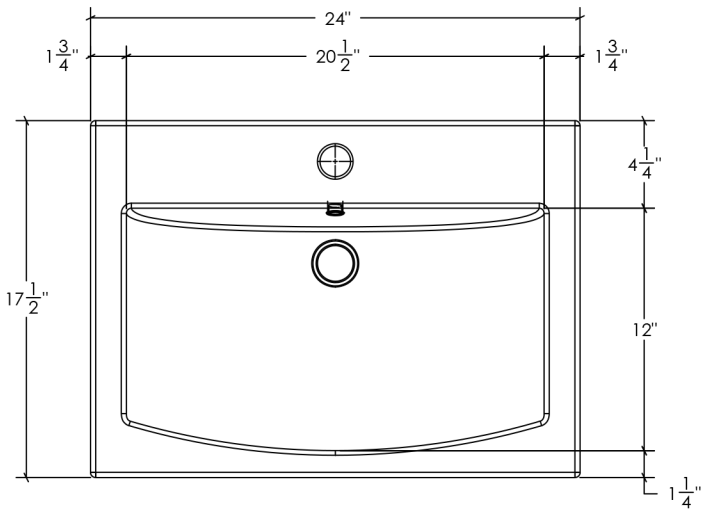
PS-006

FEATURES:

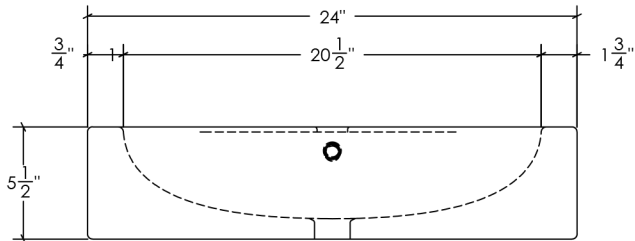
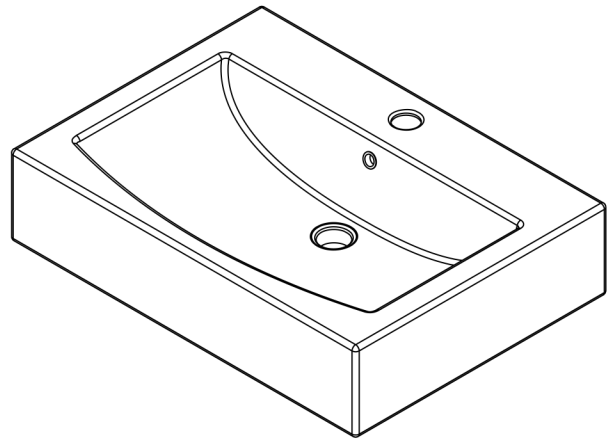
- * Sink Size: 24" x 17-1/2" x 5-1/2"
- * Material: Vitreous China
- * Counter Top Sink
- * Recommended Drain: DS-001
- * For Drains with Overflow
- * Pre-drilled Hole For Faucet
- * For Use With Standard Pop Up Drain
- * Warranty: One Year Limited Warranty

CODES / STANDARDS APPLICABLE

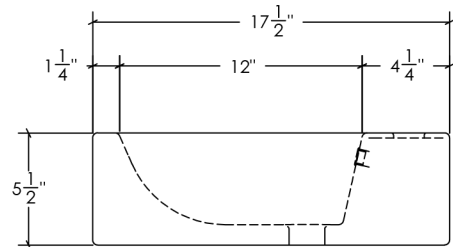
- * CSA B45
- * ASME A112.19.2



TOP VIEW



FRONT VIEW



SIDE VIEW

JOB INFORMATION:

Job Name _____

Date Specified _____

Contractor _____